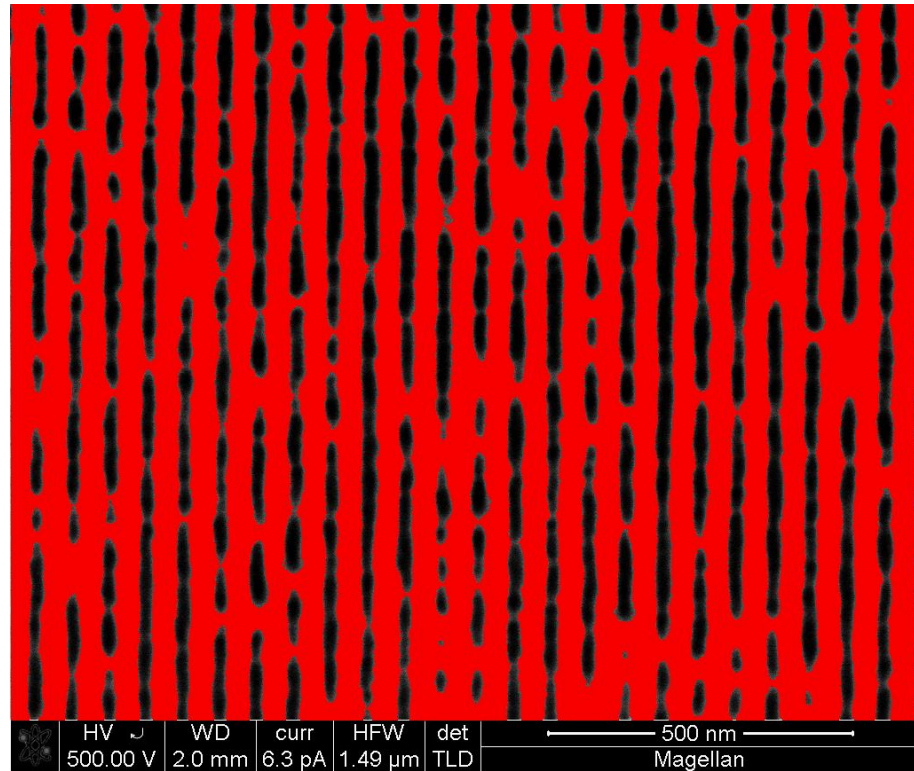
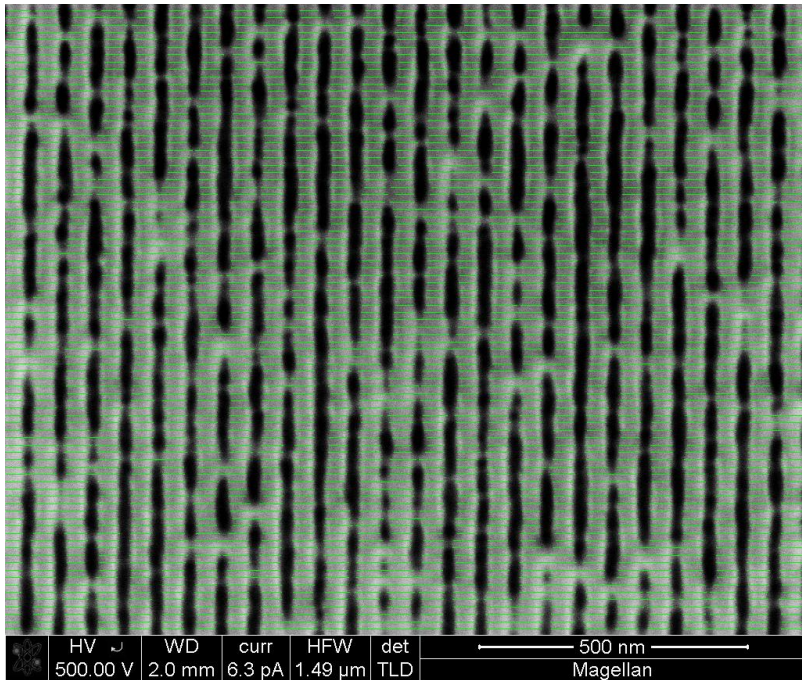


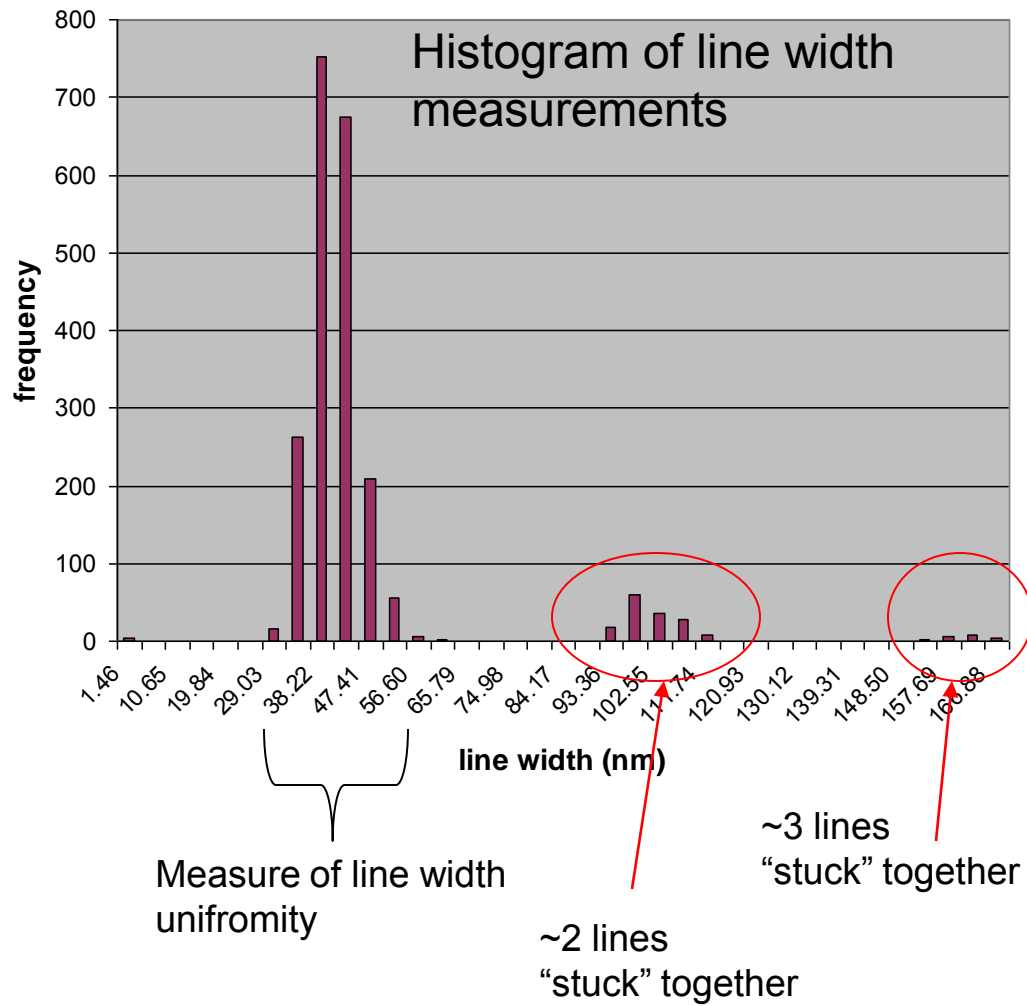
Wafer090121-002_30nm_middle 1_001



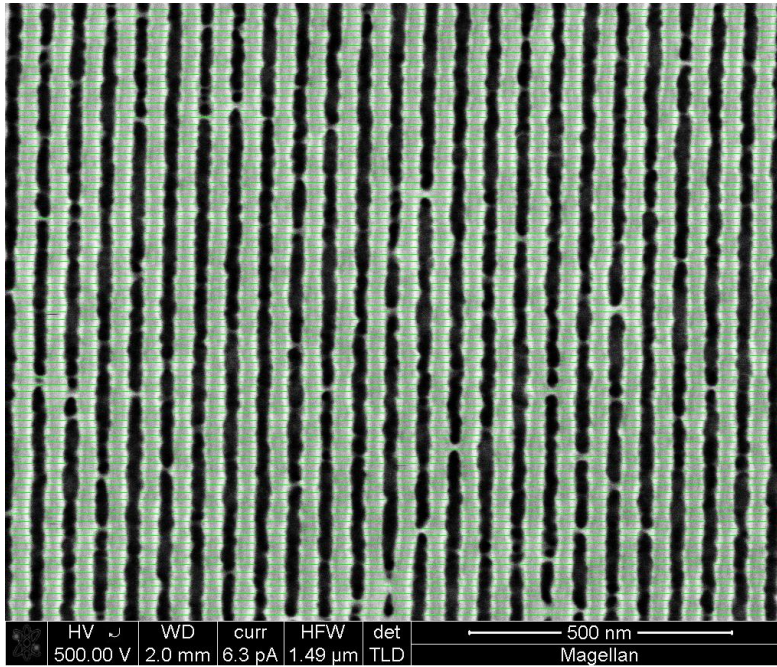
Threshold image of
Wafer090121-002_30nm_middle 1_001



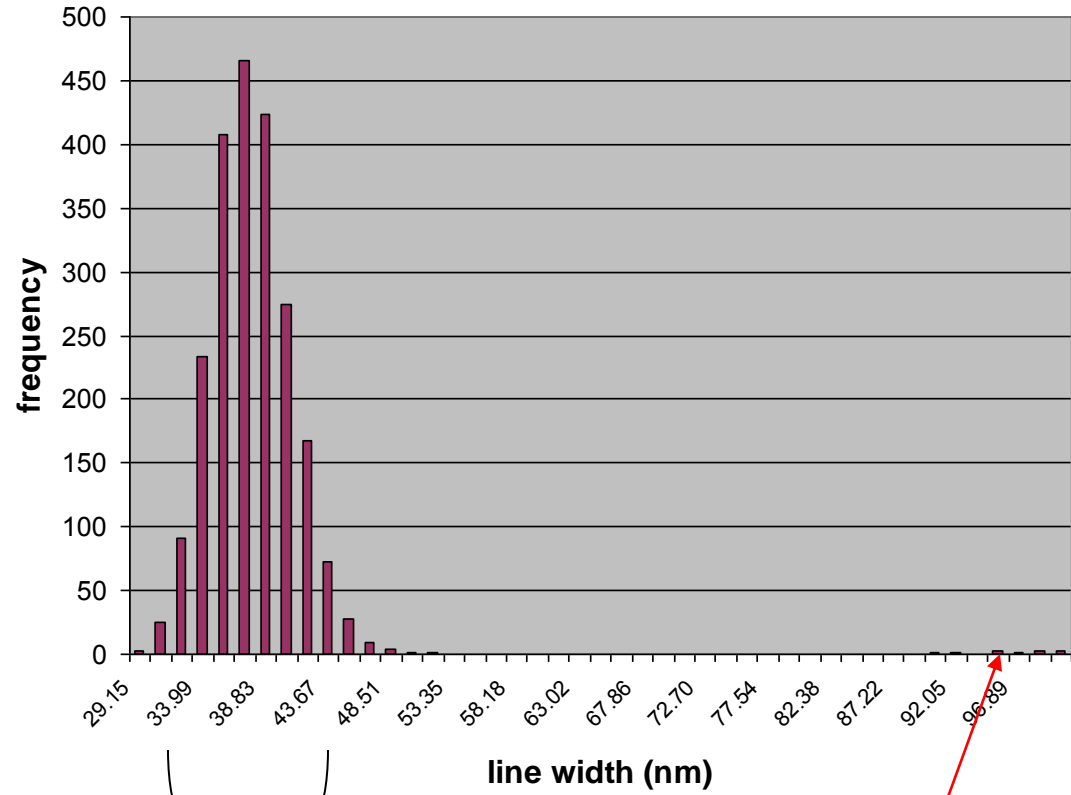
After insertion of 100 grid lines and
BOOLEAN combination



Knowing the vertical spacing of the grid lines,
You could estimate the "joined length" of lines



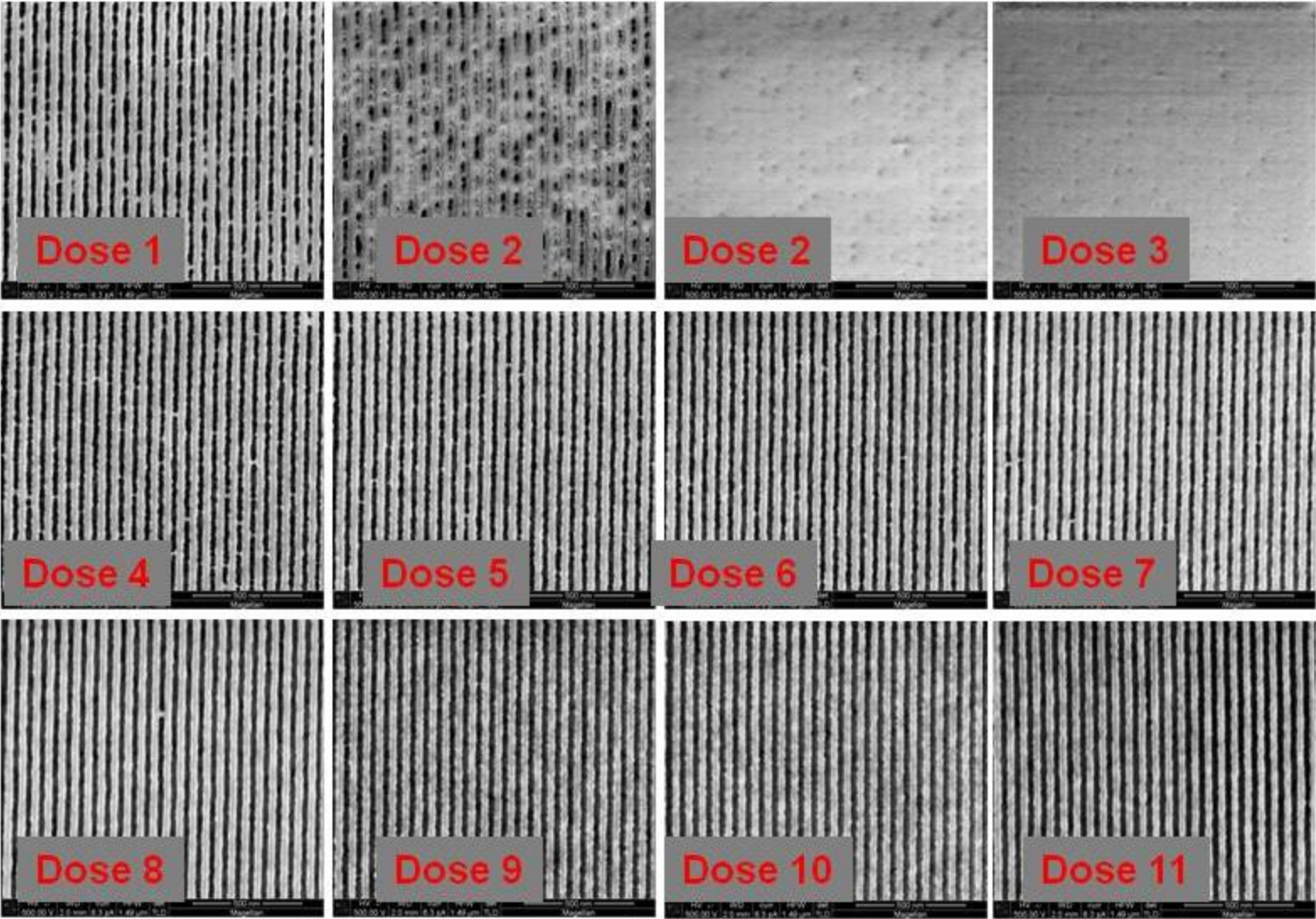
Wafer090121-002_30nm_middle bc

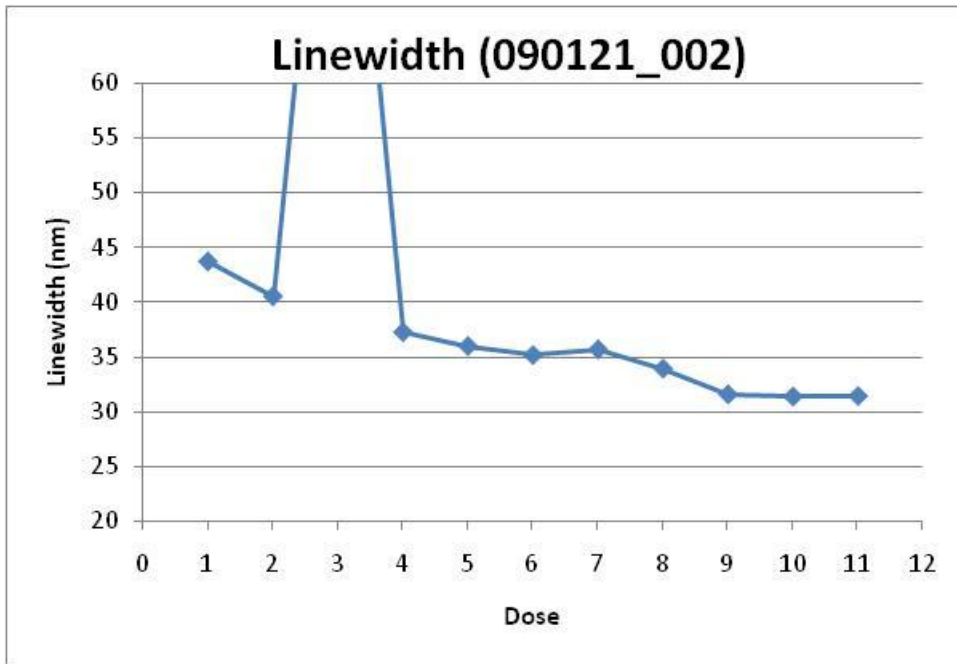


Much tighter variation
In line width

Very few
"joined lines"

Analysis of 30nm Target Lines on Intel Pilot Wafer 090121-002

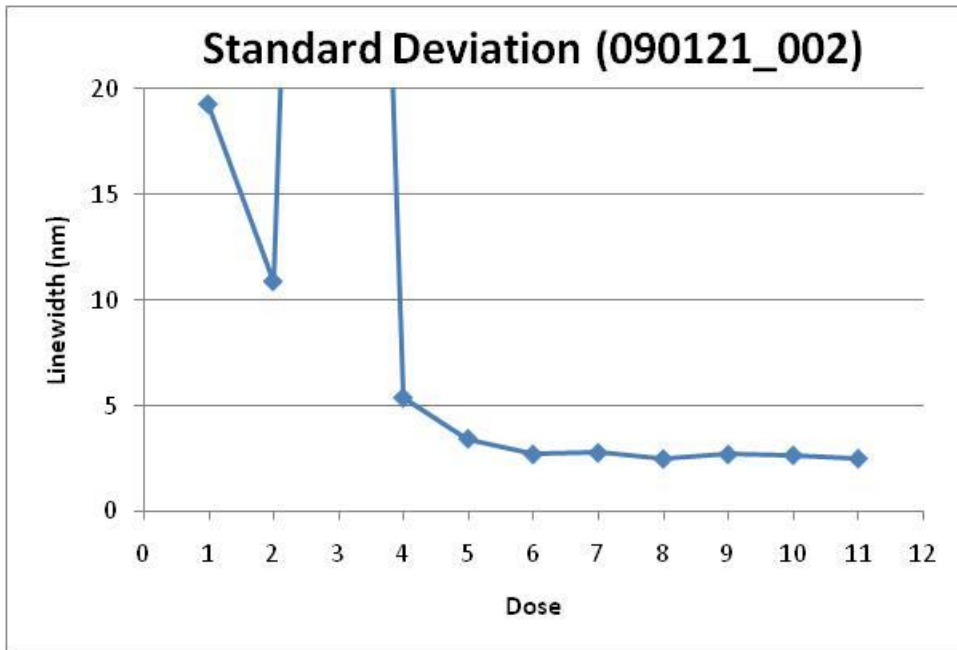


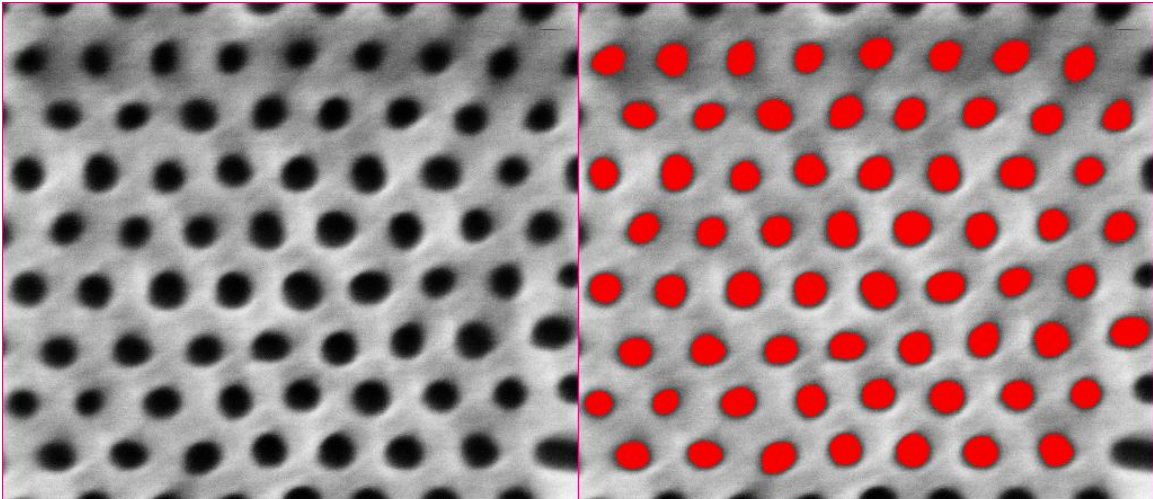


Average length of grid lines

Best Dose: Dose 11

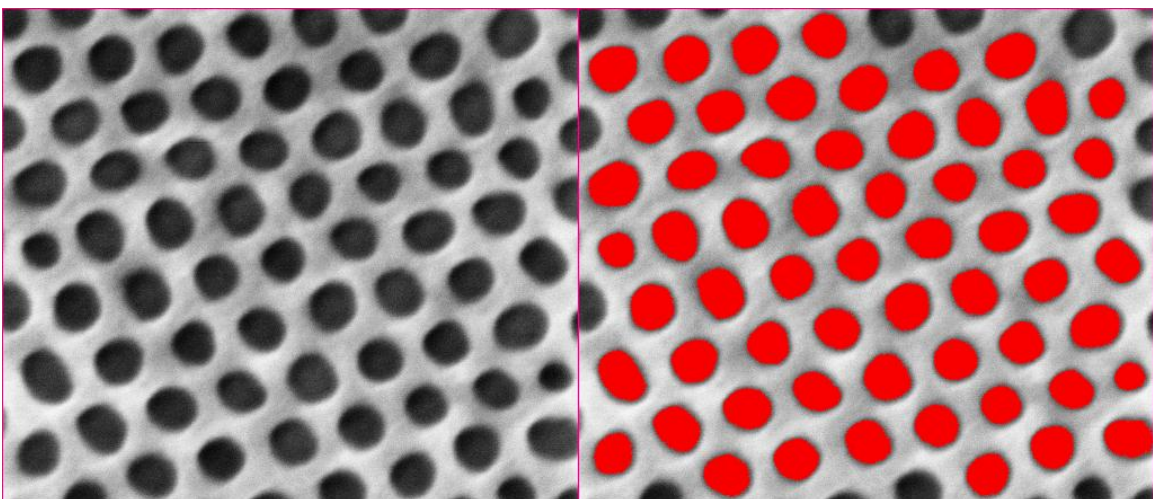
Linewidth = 31.51 σ = 2.51





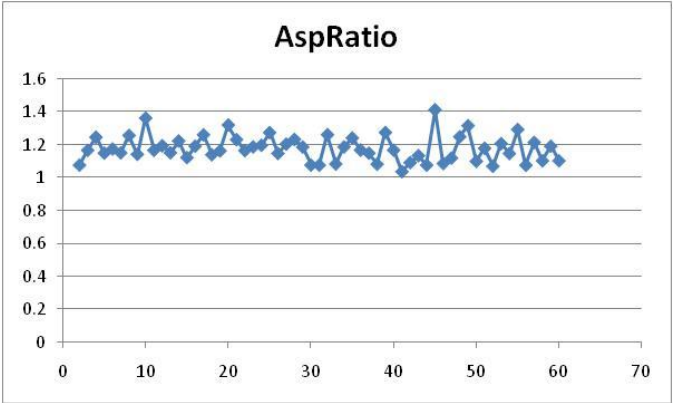
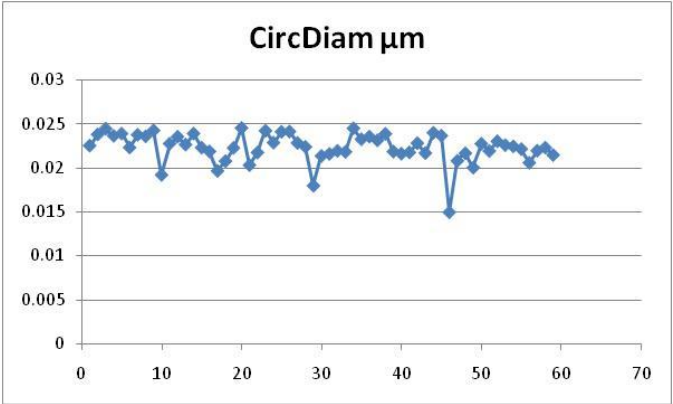
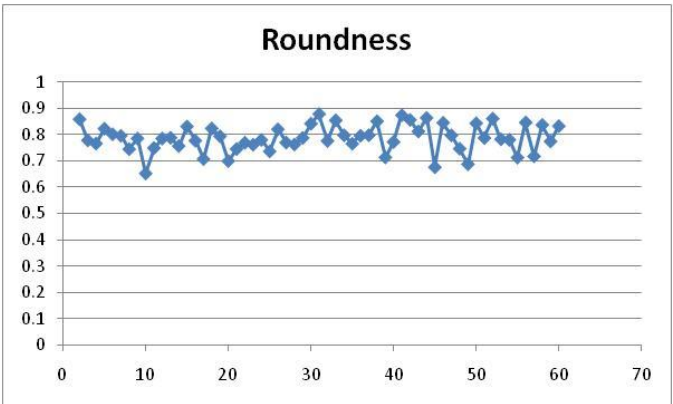
HV	WD	curr	HFWD	det
1.00 kV	2.0 mm	13 pA	298 nm	TLD

100 nm
Magellan



HV	WD	curr	HFWD	det
1.00 kV	1.9 mm	13 pA	298 nm	TLD

100 nm
Magellan



Diblock sample 190C-24hr_x0_y-25_003