



Semiconductor
Research
Corporation

Value Chain Advisory Board

Tuesday, January 23, 2018

The mission of SRC Value Chain Advisory Board is to create, develop, implement, improve, and monitor effective value management programs, systems, and methodologies.

The aim is to work with members to facilitate efficient early access to, and effective transfer of, research results.

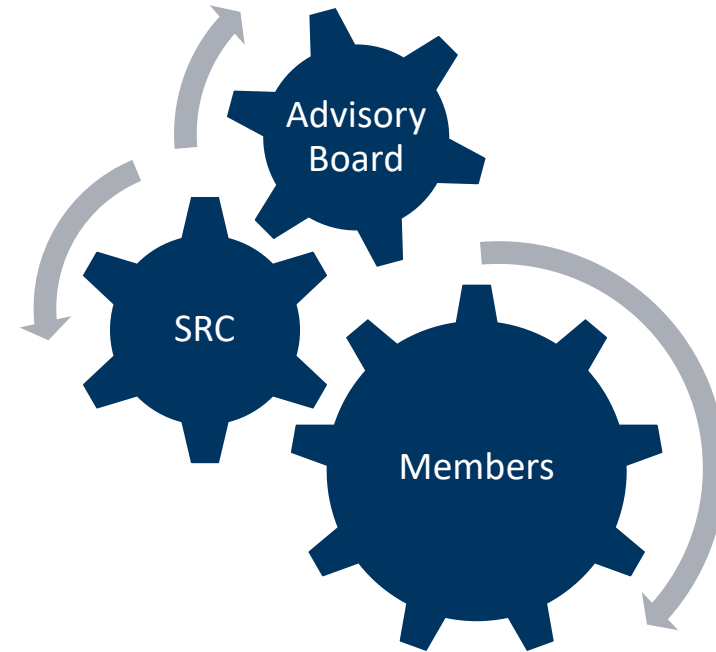


Welcome & Introduction

- Jennifer Dickens, SRC
- Jeff Glover, SRC
- Jan Clayton, SRC



1. Review of Advisory Board tasks
 - a. Liaison assignment measuring process
 - b. Advocating for SRC
2. SRC News
3. Feedback Forum





1a. Liaison assignment measuring

- Do you measure liaison assignments?
- What are your targets?
- How do you measure liaison assignments?
- How do you achieve your goal?



How to measure company Liaison assignments

<https://www.src.org/app/subscription/manage/>

Research Details

Provides a comprehensive look at all tasks or themes within a company's membership. Lists researchers, research descriptive data, liaison assignments, students, research reviews, I/S ratings (GRC), and current funding information (GRC), for all current tasks or themes and those ended within the last 90 days. Recent starts are color-coded green. Each SRC research program is reported in a separate worksheet within the Excel workbook.

Monthly delivery (last scheduled delivery 1-Jan-2018)

CHANGE

SEND ONCE

UNSUBSCRIBE



Research Details Report Subscription

- Find empty cells in Company Liaisons column



	A	B	C	D	E	F	G	H	I	J	K	L	M	N	O	P	Q	R	S	T		
	Program	Task ID	Center	SRC Contract University	PI	Co-PI	Task University	Task Leader	Co-Task Leader	Threat	Subthreat	Crosscut	Task Title	Brief Description	Task Start Date	Task Projected End	RCP Companies	Task Qualified for	Company Liaisons	Liaison Contact		
1																						
2																						
3																						
4																						
5																						
6																						
7																						





Is it working?

- Is the current process for measuring liaison assignments working for you?
- Are there roadblocks preventing you from accomplishing this?



1b. Advocating for SRC

- Created letters to encourage member engagement (July 2017)
- Identify point person for
 - Social media/university engagement
 - Learning library/education connections
- Jeni will email you each a copy of the letter for you to forward
- Report back in March

[Letters](#)



2. SRC News

- Updates from SRC to you



New Research Programs

JUMP & nCORE, research programs of the NST project, launched Jan 1

2

New Research Programs

NST: JUMP + nCORE

Pushing the limits of physics
and imagination

JUMP Begins

Technology for 2025 and Beyond

Long-term research focused on high performance, energy efficient microelectronics for end-to-end sensing and actuation, signal and information processing, communication, computing, and storage solutions that are cost-effective and secure.

nCORE-NIST

\$60M+ Research Program for Fundamental Research

nCORE funds collaborative university research in the U.S. to develop key technologies to enable novel computing and storage paradigms with long-term impact on the semiconductor, electronics, computing, and defense industries



New/Under-represented Advisory Board Members

Members

Analog Devices, Inc.

Arm Limited

EMD Performance Materials

IBM Corporation

Intel Corporation

Lockheed Martin Corporation

Micron Technology, Inc.

Northrop Grumman Corporation

Raytheon Company

Samsung Electronics Co., Ltd.

Taiwan Semiconductor Manufacturing Company

Government Participants

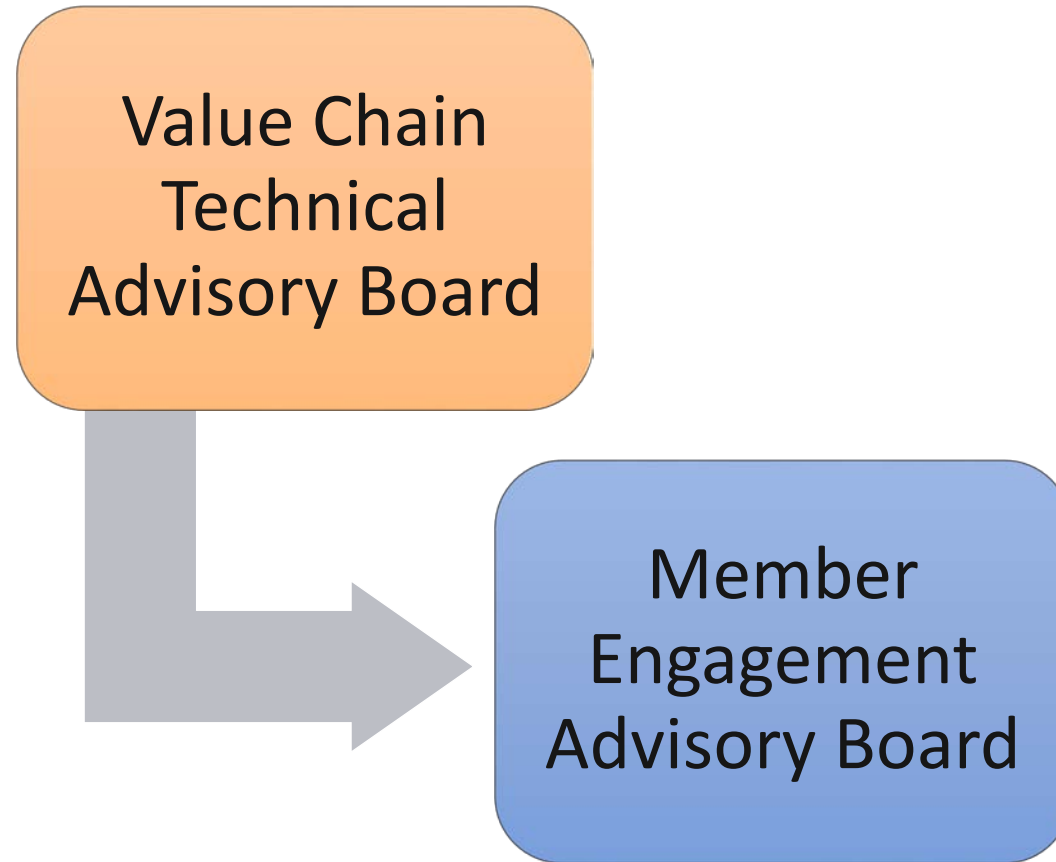
DARPA

National Institute of Standards and Technology

National Science Foundation



Refresh Advisory Board Appellation





COTS Project Software Selection

- Association Management Software built on





2018 Proposed Meeting Schedule

- Q1 Jan 23 2018 2 PM Tuesday
- Q2 Mar 14 2018 2 PM Wednesday (between ETAB & BOD meetings)
- Q3 July 10 2018 2 PM Tuesday
- Q4 Sep 18 2018 7 AM Tuesday morning at TECHCON



3. Feedback Forum

- Is your business changing in ways that affect your SRC participation?